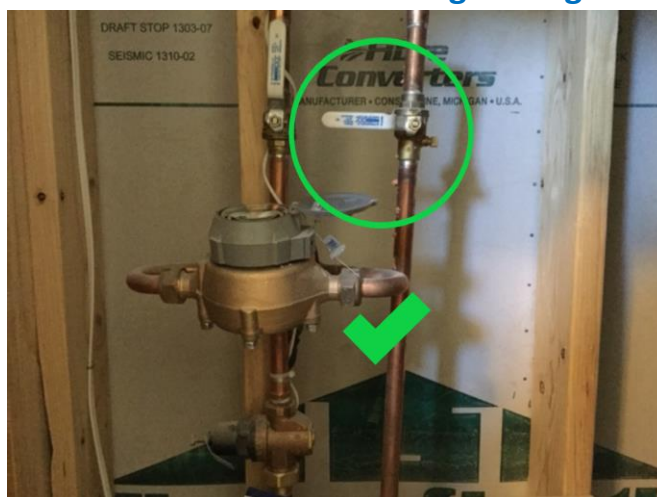


- Look for the ball valve with the bleeder cap attached on the side. The blue arrow is pointing at it in the picture above.
- When you have found the correct valve, you will need to turn it until the handle is at a 90 degree angle.





Step 2- Go outside to the backflow and turn the 2 valves to a 45 degree angle as seen in the photo above.



Step 3 – Loosen the bleeder cap on the backflow until you see water leaking out. You can leave cap on just need to loosen enough for drainage.



Step 4 – Open the valve box located on the ground next to you backflow. At the end you should see a PVC ball valve. Turn that to a 45 degree angle until you start to see water coming out of it.

Please note: The direction given will work for most houses. If there is something different about your house directions for draining can be easily found on YouTube or by googling it.