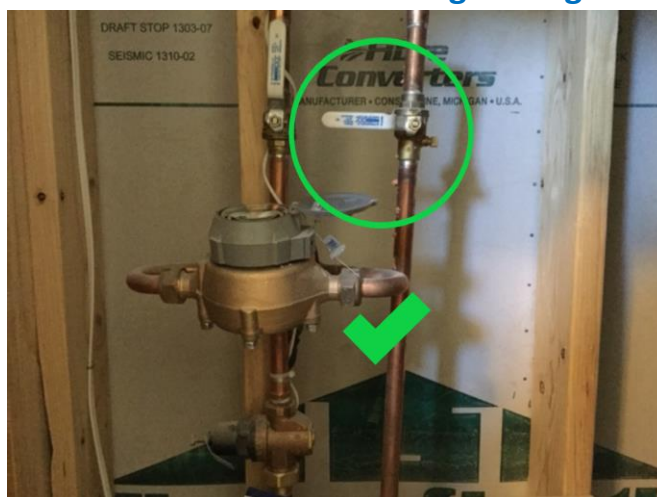


- Look for the ball valve with the bleeder cap attached on the side. The blue arrow is pointing at it in the picture above.
- When you have found the correct valve, you will need to turn it until the handle is at a 90 degree angle.





Step 2- Go outside to the backflow and turn the 2 valves to a 45 degree angle as seen in the photo above.



Step 3 – Loosen the bleeder cap on the backflow until you see water leaking out. You can leave cap on just need to loosen enough for drainage.



Step 4 – Open the valve box located on the ground next to you backflow. At the end you should see a PVC ball valve. Turn that to a 45 degree angle until you start to see water coming out of it.

Water will need to be turned back on after this unseasonal freeze. Temperatures this time of year will still be too high to not water the grass the remainder of the summer season

Please note: The direction given will work for most houses. If there is something different about your house directions for draining can be easily found on YouTube or by googling it.